

www.varitron.com.tw
www.c-var.com

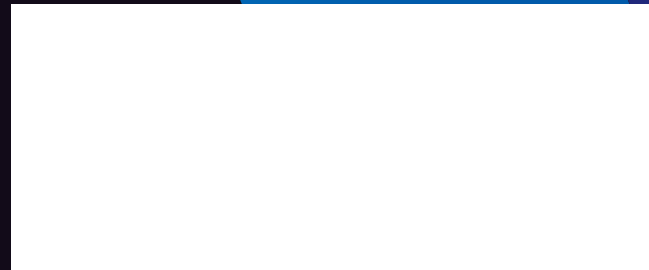
VARITRON® 驅動科技系列產品 Gear Transmission Technologies

VARITRON®
Take Control In Speed

驅動科技系列產品
Power Transmission Technologies

台灣 中國變速工程股份有限公司
Varitron Engineering (Taiwan) Co., Ltd.

台灣新北市五股區中興路一段171巷45號
No.45, Ln.171, Sec.1, Zhongxing Rd.,
Wugu Dist., New Taipei City, Taiwan
TEL:+886-2-2988-9598
FAX:+886-2-2985-0998
EMAIL:sales@c-var.com

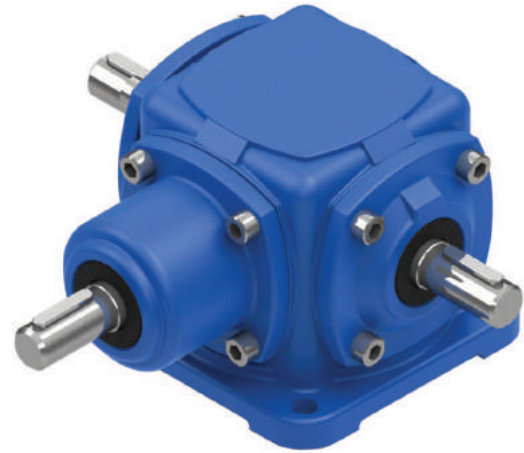


Spiral Bevel Gear Box

十字轉向機

- Easy to install, suitable for most application.
- 24 different mounting and directions available.
- High 95% efficiency for ratio 1/1, 1/2, 1/3, 1/4, 1/5.
- Large transmission force, clockwise or anti-clockwise operation.
- Low vibration and noise.

- 可簡單裝置於任何機械場所。
- 方向可由客戶自行選擇上、下、左、右24種變化。
- 齒輪傳動效率可達95%，速比分為1/1,1/2,1/3,1/4,1/5
- 大輸出扭矩，正逆轉使用。
- 低震動、低噪音。



Shaft Arrangement and Direction of Rotation

軸配置及轉向

ILR		IR		IL	
ILR-O		IR		IL	
ILD		IU		ID	
IUD-O		IU-O		ID-O	
ULR		UR		UL	
ULR-O		UR-O		UL-O	
DLR		DR		DL	
DLR-O		DR-O		DL-O	

Installation pattern

安裝型式

B3		B6		V5	
B8		B7		V6	
B3		B6		V5	
B8		B7		V6	
B3		B6		V5	
B8		B7		V6	
B3		B6		V5	
B8		B7		V6	

How to order 選型

LG 02 - 10 - ILR - 0

① ② ③ ④ ⑤



①	Model 型式	LG
②	Frame Size 型號	02,04,06,10,12,16,20,25
③	Ratio 減速比	10:1/1, 20:1/2, 30:1/3, 40:1/4, 50:1/5
④	Shaft Arrangement 軸配置 (IR, ILR, IL, IV, ...)	Refer to Page 216. 參考第 216 頁
⑤	Direction of Rotation 轉向 (B3, B6, V5, ...)	Refer to Page 216. 參考第 216 頁

* Dimensions and specifications in the catalog are subject to change without notice. 尺寸及規格若有變動，將不另行通知。

* Optional Smart Monitoring System can be integrated, contact Varitron® or your sales personal. 如需加購智能監控系統，請洽中國變速。

Specifications 規格表 ③

Ratio 速比 1 : 1

型號 Frame Size	轉速 R.P.M	3600	2750	1900	1750	1460	1150	870	580	400	300	200	150	100	50	10
		LG02	kW	2.926	2.282	1.617	1.498	1.26	1.008	0.77	0.5236	0.3661	0.2772	0.1862	0.1407	0.0952
	Kgf.m	0.77	0.791	0.812	0.819	0.826	0.833	0.861	0.861	0.875	0.882	0.889	0.896	0.91	0.91	0.931
LG04	kW	6.503	5.341	4.123	3.927	3.486	2.933	2.422	1.715	1.204	0.91	0.616	0.4655	0.3136	0.1589	0.322
	Kgf.m	1.722	1.855	2.072	2.142	2.275	2.436	2.66	2.821	2.87	2.891	2.94	2.961	2.996	3.031	3.073
LG06	kW	17.85	15.26	11.62	10.78	9.45	8.05	6.622	4.977	3.633	2.758	1.869	1.414	0.952	0.4851	0.0994
	Kgf.m	4.732	5.292	5.838	5.88	6.174	6.678	7.28	8.19	8.68	8.75	8.89	8.96	9.1	9.24	9.45
LG08	kW	-	48.3	35.49	32.97	27.93	22.4	17.29	11.83	8.54	6.664	4.445	3.444	2.443	1.288	0.2702
	Kgf.m	-	16.73	17.85	17.99	18.27	18.55	18.97	19.46	20.37	21.21	21.21	21.91	23.31	24.64	25.76
LG10	kW	-	-	50.05	47.11	41.23	35.07	28.9	21.35	15.05	11.48	7.77	5.92	4	2.04	0.4193
	Kgf.m	-	-	25.13	25.69	26.95	29.12	31.5	35.14	35.91	36.54	37.1	37.66	38.22	38.85	40.04
LG12	kW	-	-	68.25	64.33	56.63	48.09	39.55	30.03	23.24	18.69	12.74	9.66	6.55	3.34	0.6881
	Kgf.m	-	-	34.3	35.07	37.03	39.9	43.4	49.42	55.44	59.43	60.76	61.46	62.44	63.7	65.66
LG16	kW	-	-	-	-	114.8	97.3	79.8	60.27	46.48	37.94	25.83	19.39	12.95	6.47	1.33
	Kgf.m	-	-	-	-	72.8	78.4	84.7	95.9	107.1	116.9	119.7	119.7	119.7	119.7	122.5
LG20	kW	-	-	-	-	-	234	193	145	-	90.8	-	-	35.3	-	3.53
	Kgf.m	-	-	-	-	-	188	205	232	-	280	-	-	327	-	327
LG25	kW	-	-	-	-	-	-	335	252	-	159	-	-	60.0	-	6.30
	Kgf.m	-	-	-	-	-	-	356	402	-	489	-	-	555	-	583

Ratio 速比 1 : 2

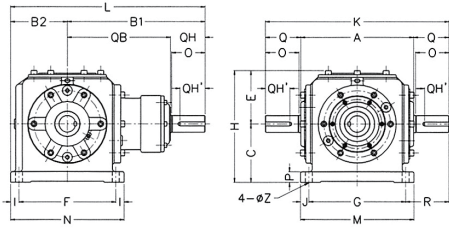
型號 Frame Size	轉速 R.P.M	3600	2750	1900	1750	1460	1150	870	580	400	300	200	150	100	50	10
		LG04	kW	5.45	4.242	2.996	2.779	2.338	1.869	1.428	0.966	0.6776	0.5124	0.3451	0.2604	0.175
	Kgf.m	1.47	1.498	1.533	1.547	1.561	1.582	1.596	1.617	1.645	1.659	1.68	1.687	1.701	1.715	1.771
LG06	kW	12.95	10.08	7.14	6.65	5.607	4.48	3.437	2.338	1.638	1.239	0.833	0.6314	0.4249	0.2149	0.0434
	Kgf.m	3.5	3.57	3.661	3.696	3.738	3.794	3.843	3.927	3.990	4.018	4.053	4.095	4.137	4.186	4.228
LG08	kW	-	18.62	12.81	11.83	9.87	7.91	6.09	4.144	2.905	2.205	1.491	1.127	0.756	0.385	0.0784
	Kgf.m	-	6.594	6.594	6.594	6.594	6.699	6.818	6.958	7.07	7.14	7.21	7.28	7.35	7.49	7.63
LG10	kW	-	-	21.35	19.74	16.73	13.37	10.29	7	4.928	3.738	2.527	1.911	1.288	0.6538	0.1337
	Kgf.m	-	-	10.92	10.99	11.13	11.27	11.48	11.76	11.97	12.11	12.32	12.39	12.53	12.74	13.02
LG12	kW	-	-	36.75	33.81	28.21	22.26	16.80	11.61	8.05	6.104	4.13	3.129	2.107	1.071	0.2191
	Kgf.m	-	-	18.83	18.83	18.83	18.83	18.83	19.11	19.6	19.81	20.09	20.3	20.51	20.86	21.35
LG16	kW	-	-	-	61.39	52.01	41.72	32.20	22.05	15.54	11.76	7.98	6.055	4.088	2.079	0.4256
	Kgf.m	-	-	-	34.16	34.65	35.28	36.05	37.03	37.8	38.15	38.85	39.27	39.83	40.46	41.44
LG20	kW	-	-	-	-	126	102	79.0	54.2	29.0				10.1		1.06
	Kgf.m	-	-	-	-	161	164	168	173	179				187		196
LG25	kW	-	-	-	-	-	199	155	107	57.5				20.1		2.11
	Kgf.m	-	-	-	-	-	321	329	340	355				372		390

* Larger Ratio available, contact Varitron® or your sales personal. 如需更大減速比，請洽中國變速。

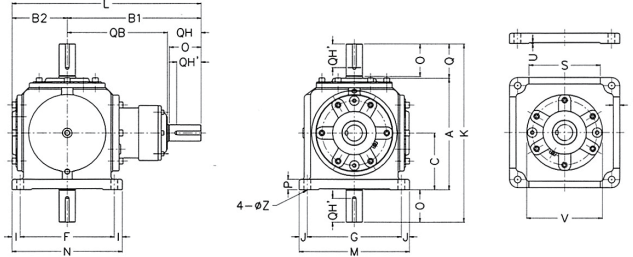
Spiral Bevel Gear Box Series 十字轉向機

Dimensions 外型尺寸表

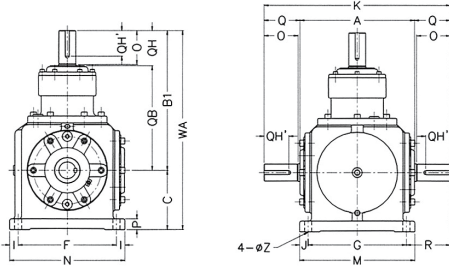
ILR
ILR-O



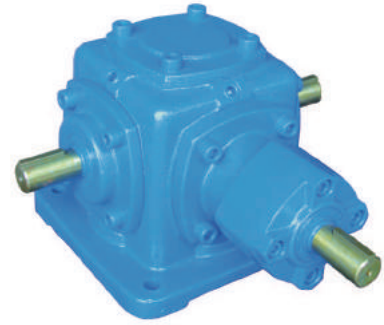
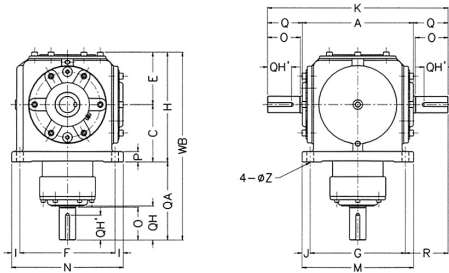
IUD
IUD-O



ULR
ULR-O



DLR
DLR-O



Frame Size 型號	A	B1	B2	C	*D	E	F	G	H	I	J	K	L	M,N	P	Q	QA	Q,B	QH	QH'	R
LG0210	110	123	52	52	2.85	50	84	84	102	10	10	180	175	104	10.5	35	71	89	34	23	48
LG0410/LG0420	152	179.5	79	76	0	73	125	125	149	16.5	16.5	232	258	158	14	40	103	140	39.5	28	53.5
LG0610/LG0620	206	222	95	90	13	93	152	152	183	19	19	314	316	190	21	54	131	168	54	37	81
LG0810/LG0820	260	307	117.5	115	15	113	195	195	227	20	20	416	424.5	235	22	78	192	228	79	55.5	110.5
LG1010/LG1020	289	355.3	142.5	140	4.5	137	240	240	277	22.5	22.5	470	497.8	285	25	90.5	215.3	264.5	90.8	68.5	115
LG1210/LG1220	338	414	170	175	-6	170	290	290	345	25	25	550	584	340	32	106	239	309	105	75.5	130
LG1610/LG1620	420	455	195	200	10	186	330	330	386	30	30	630	650	390	40	-	255	-	-	-	150
LG2010/LG2020	510	545	205	245	10	217	430	330	462	30	40	720	750	410	32	-	300	-	-	-	195
LG2510/LG2520	600	660	240	290	10	255	520	390	545	30	45	860	900	480	35	-	370	-	-	-	235

Frame Size 型號	WA	WB	Y	Z	U	S	T	V	Lateral Shaft 側軸			Cross Shaft 十字軸			GD ² (kgf-m ²)	Weight 重量 (kg)
									ØSD	O	Key	ØSD	O	Key		
LG0210	175	173	48	9	-	-	-	80	15	33	5x5	15	33	5x5	0.0002	1.9
LG0410/LG0420	255.5	252	58	10.5	3	92	9	110	19(16)	38	6x6(5x5)	19	38	5x5	0.0006 (0.00048)	9.5
LG0610/LG0620	312	314	90	14	3	106	10	140	25	50	8x7	25	50	8x7	0.0054 (0.00266)	20
LG0810/LG0820	422	419	125	14	4	147	14.5	172	40	75	12x8	40	75	10x8	0.019 (0.014)	47
LG1010/LG1020	495.3	496.8	137	16	4	128	19.5	180	45	90.5	14x9	45	90.5	14x9	0.092 (0.027)	60
LG1210/LG1220	589	584	134	21	-	220	20	234	50	100	14x9	50	100	12x8	0.10(0.056)	117
LG1610/LG1620	655	641	193	25	-	-	-	-	60	105	18x11	60	105	18x11	-	188
LG2010/LG2020	790	762	220	6x21	-	-	-	-	72	105	20x12	72	105	20x12	-	297
LG2510/LG2520	950	916	270	6x24	-	-	-	-	85	130	22x14	85	130	22x14	-	488

※ For ratio 1/3, 1/4, 1/5, contact Varitron® for the dimensions. 若需減速比 1/3, 1/4, 1/5, 尺寸請洽中國變速。

POWER TRANSMISSION INDEX

VARITRON®
Take Control In Speed

A1

Cycloidal Drive Reducer

賽驅樂減速機

HM



Pg.47

HX



Pg.55

H



Pg.61

VM



Pg.64

VX



Pg.72

V



Pg.78

Page
1~82

A2

RV Precision Cycloidal Gear

高精密擺線減速機

RV-E



Pg.84

RV-C



Pg.84

Page
83~84

B1

Precision Planetary Gearbox

精密行星減速機

DA



Pg.91

DM



Pg.93

DF



Pg.95

DH



Pg.97

DL



Pg.99

DN



Pg.101

Page
85~113

RAM-S



Pg.103

RAM-SS



Pg.104

RAM-H



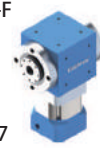
Pg.105

RAM-D



Pg.106

RAM-F



Pg.107

RAH-S



Pg.109

RAH-SS



Pg.110

RAH-H



Pg.111

RAH-D



Pg.112

RAH-F



Pg.113

B2

Planetary Gear Reducer

遊星式減速機

HF



Pg.121

VF



Pg.122

HS



Pg.123

VS



Pg.124

Page
114~125

C1

Compact Helical Gear Motor Reducers

小型齒輪減速機

GH



Pg.130

GHM



Pg.131

GHD



Pg.132

GV



Pg.133

GVM



Pg.134

GVD



Pg.135

Page
126~135

C2

Helical Gear Motor Reducers

齒輪減速機

AMH



Pg.138

ADH



Pg.139

AMV



Pg.140

ADV



Pg.141

Page
136~141

POWER TRANSMISSION INDEX

C3

SEW Type Gear Reducer

歐規齒輪減速機

K



Pg.143

S



Pg.144

R



Pg.145

F



Pg.146

Page
142~146

C4

Industrial Helical Bevel Gearbox

齒輪箱

H



Pg.148

B



Pg.148

Page
147~148

D1

NMHV Hypoid-Helical Gear Reducer

萬向螺旋齒輪減速機

NMHV



Pg.156

NHV



Pg.157

Page
149~157

D2

NMRV Worm Gear Reducer

萬向蝸輪減速機

NMRV



Pg.168

NMRV-NMRV



Pg.169

NRV



Pg.170

NRV-NMRV



Pg.170

PC-NMRV



Pg.171

Page
158~173

D3

Worm Gear Speed Reducer

蝸輪減速機

HW



Pg.181

HMW



Pg.182

HOM



Pg.183

LW



Pg.184

LMW



Pg.185

HOW



Pg.186

Page
174~201

LOW



Pg.186

VW



Pg.187

VMW



Pg.188

VOW



Pg.189

VOM



Pg.190

UW



Pg.191

UMW



Pg.192

TW



Pg.193

TMW



Pg.193

TOW



Pg.194

TOM



Pg.194

VOF



Pg.195

VOFM



Pg.195

LH



Pg.196

LHM



Pg.196

LOH



Pg.197

LOHM



Pg.197

VH



Pg.198

UH



Pg.198

VHM



Pg.199

UHM



Pg.199

VOH



Pg.200

VOHM



Pg.200

E1

Disco Speed Variator

無段變速機

AM



Pg.208

AK



Pg.208

AVM



Pg.208

AV



Pg.208

AHM



Pg.208

TXF



Pg.209

TKF



Pg.209

Page
202~209

E2

Belt Stepless Variable Speed Drive

皮帶變速機

APH



Pg.210

LW



Pg.211

HV



Pg.211

Page
210~211

E3

Five Steps Buffered Speed Changer

五段緩衝式變速機

LM



Pg.212

Page
212

E4

PIV Chain Variable Speed Drive

鍊條無段變速機

PIV-H



Pg.214

PIV-V



Pg.214

Page
213~215

F1

Spiral Bevel Gear Box

十字轉向機

LG



Pg.218

Page
216~218

F2

Spiral Screw Rod Actuators

螺桿升降機

SR



Pg.221

SRM



Pg.221

Page
219~222

G

Induction Electric Motor

感應馬達

AEEH/AEEP/AEES



Pg.228

AEVH/AEVP/AEVS



Pg.229

AEEH-ALB3



Pg.231

AEVH-ALB5



Pg.232

AEVH-ALB14



Pg.232

Page
223~232

H

Agitator Mixer

攪拌機

HHM



Pg.237

LW



Pg.238

GVV



Pg.239

CS/CSS



Pg.240

HMB



Pg.241

SC/SCB



Pg.242

Page
233~242