

www.varitron.com.tw
www.c-var.com

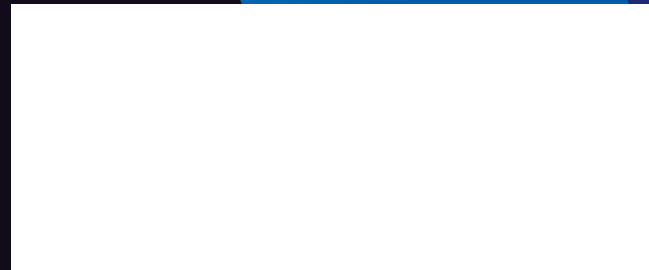
VARITRON® 驅動科技系列產品 Gear Transmission Technologies

VARITRON®
Take Control In Speed

驅動科技系列產品
Power Transmission Technologies

台灣 中國變速工程股份有限公司
Varitron Engineering (Taiwan) Co., Ltd.

台灣新北市五股區中興路一段171巷45號
No.45, Ln.171, Sec.1, Zhongxing Rd.,
Wugu Dist., New Taipei City, Taiwan
TEL:+886-2-2988-9598
FAX:+886-2-2985-0998
EMAIL:sales@c-var.com



PIV Chain Variable Speed Drive

PIV 鏈條無段變速機

Features 特點

Outstanding Stability of Speed

Precision mechanism design prevents slip lost of speed even when uneven load.

High Efficiency Exceptional Torque Characteristics

Special design metal slatted chain and grooved curved conical discs provides high efficiency and torque characteristics.

Modular Design

Modular design suitable for horizontal or vertical mounting with dual drive shafts provide flexibility of coupling.

Operationally Reversible and Wide Range of Output Speed

PIV Chain variable speed drive has a wide range of variable ratio of 1:3,1:4.5 & 1:6 with operationally reversible.

精密的速度變化

精密的機構設計，即使負荷改變也不會有滑失現象發生，能範圍內保持同一速度。

高效率與卓越的轉矩特性

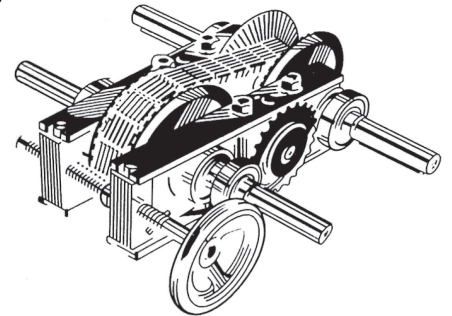
特殊設計疊片式鏈條與多槽的傘形輪盤提高傳動效率與高轉矩特性。

模組化設計

模組化設計提供立式與臥式簡單互換腳座，並提供雙入力及雙出力軸方便配置。

變速範圍大及可正逆轉

變速比1:3, 1:4.5 & 1:6提供更大的變速範圍及可逆轉。



Catalog 目錄



gear.fyi/pic

Manual 保養手冊



gear.fyi/pim

Selection Table 型號選擇表

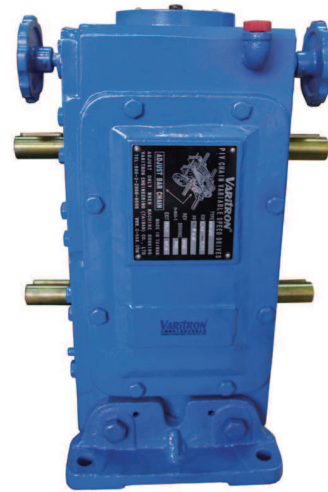
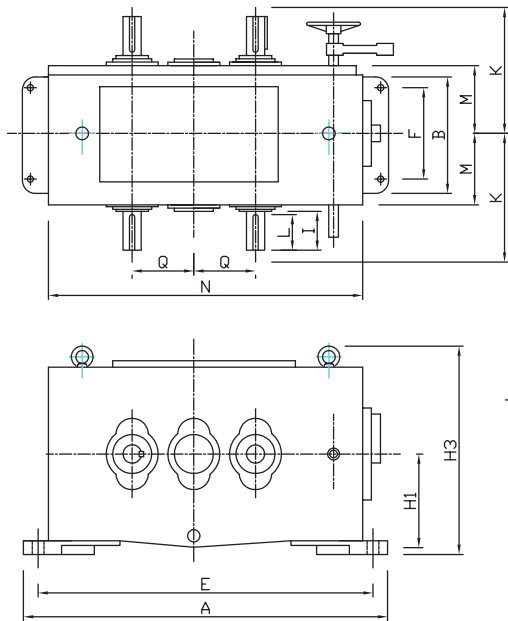
Frame Size 型號	Ratio 變速比	Input RPM 輸入軸轉速 N ₁ rpm	Output RPM 輸出軸轉速 rpm		Output Power 輸出功率 (kW)		Output Torque 輸出扭矩 (Nm)		Chain Type 鍊條規格	Max. Input Power 最大輸入馬力 (kW)
PIV-P0	3:1	720	1245	415	0.559	0.426	4.28	9.8	P0-0100 26 節	0.75
	4.5:1	720	1530	340	0.559	0.349	3.48	9.8	P0-0100 25 節	
	6:1	720	1770	295	0.559	0.301	2.94	9.8	P0-0100 25 節	
	3:1	830	1437	479	0.647	0.456	4.28	9.8	P0-0100 26 節	
	4.5:1	830	1706	391	0.647	0.401	3.48	9.8	P0-0100 25 節	
	6:1	830	2028	338	0.647	0.346	2.94	9.8	P0-0100 25 節	
	3:1	950	1644	548	0.735	0.559	4.28	9.8	P0-0100 25 節	
PIV-P1	4.5:1	950	2016	448	0.735	0.456	3.48	9.8	P0-0100 25 節	1.5
	3:1	720	1245	415	1.12	0.82	8.3	18.6	P1-0100 26 節	
	4.5:1	720	1530	340	1.12	0.67	6.9	18.6	P1-0100 25 節	
PIV-P2	6:1	720	1770	295	1.12	0.59	5.9	18.6	P1-0100 25 節	3
	3:1	720	1245	415	2.24	1.64	16.7	37.3	P3-0100 27 節	
	4.5:1	720	1530	340	2.24	1.34	13.7	37.3	P3-0100 26 節	
PIV-P3	6:1	720	1770	295	2.24	1.12	11.8	37.3	P1-0100 29 節	4
	3:1	720	1245	415	3.73	2.6	28.5	58.8	P3-0100 35 節	
	4.5:1	720	1530	340	3.73	2.06	22.6	58.8	P3-0100 34 節	
PIV-P4	6:1	720	1770	295	3.73	1.86	19.6	58.8	P1-0100 33 節	7.5
	3:1	720	1245	415	5.9	4.1	44.1	93.2	P4-0110 34 節	
	4.5:1	720	1530	340	5.9	3.35	36.3	93.2	P4-0110 33 節	
PIV-P5	6:1	720	1770	295	5.9	2.97	31.4	93.2	P4-0110 33 節	11
	3:1	720	1245	415	11.2	7.8	83.4	176.5	P5-0110 41 節	
	4.5:1	720	1530	340	11.2	6.3	68.9	176.5	P5-0100 40 節	
PIV-P6	6:1	720	1770	295	10.4	5.6	54.9	176.5	P5-0100 39 節	22
	2.8:1	625	1045	375	19.4	11.5	176.5	294.2	P6-0110 40 節	
	4:1	625	1250	312	18.6	9.7	137.3	294.2	P6-0100 39 節	
	5.6:1	550	1300	232	16.4	7.46	117.7	294.2	P6-0100 38 節	

PIV Chain Variable Speed Drive 鏈條無段變速機

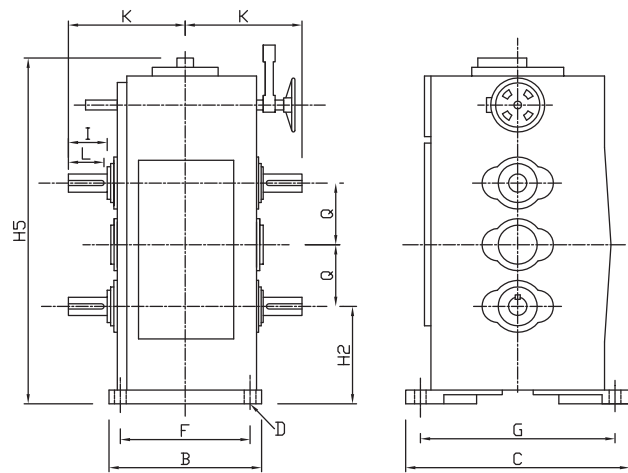
Dimensions 外型尺寸表



HORIZONTAL TYPE
橫式



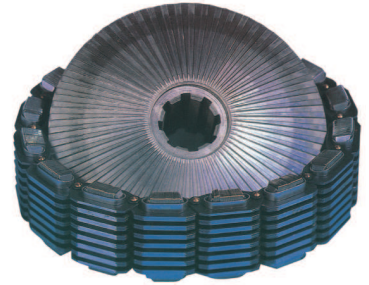
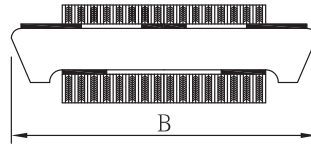
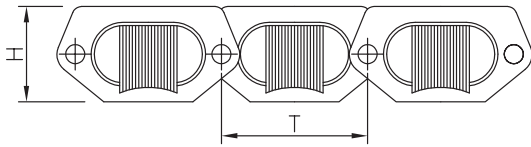
VERTICAL TYPE
直式



Frame Size 型號	H1	H2	H3	H5	K	Q	M	N	Foot Stock 腳座							Shaft 軸心					Weight 重量 (kg)
									A	B	C	D	E	F	G	S	J	W	I	L	
PIV-P0	90	90	173	315	111	60	67.5	296	360	116	242	11	325	85	212	16	5	5	31.5	28	30
PIV-P1	132	132	300	430	160	80	85	384	450	185	285	14	410	150	250	24	8	7	60	50	50
PIV-P2	150	150	345	505	180	95	110	460	540	240	345	18	495	200	300	28	8	7	60	50	82
PIV-P3	170	170	380	614	233	124	134	580	660	307	390	18	615	265	350	32	10	8	80	70	145
PIV-P4	200	215	422	762	257	152	155	712	810	350	470	23	755	295	410	38	12	10	80	70	235
PIV-P5	250	250	524	875	326	180	190	830	930	425	590	28	870	360	530	45	14	9	110	100	400
PIV-P6	300	300	635	1045	400	215	230	1000	1150	510	750	36	1060	410	660	60	18	11	140	125	750

※ Optional Smart Monitoring System can be integrated, contact Varitron® or your sales personal. 如需加購智能監控系統，請洽中國變速。

Chain Specifications Table 鏈條規格表

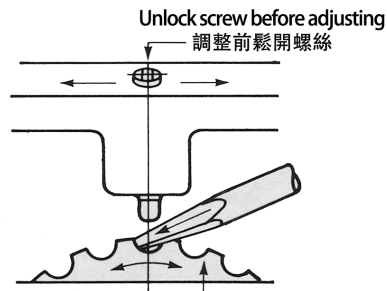
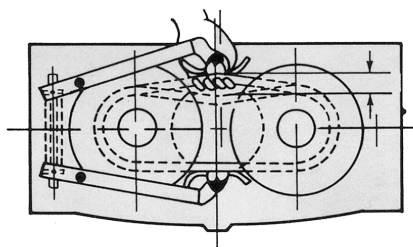


Frame Size 型號	Chain 疊片式鏈條		Range 調整範圍	T	B	H
	Type 規格	Joint 節數				
PIV-P0	P0 - 0100	26	3	18.7	24.39	9.5
	P0 - 0100	25	4.5	18.7	24.39	9.5
	P0 - 0100	25	6.1	18.7	24.39	9.5
PIV-P1	P1 - 0100	26	3	25	37.84	13.5
	P1 - 0100	25	4.5	25	37.84	13.5
	P1 - 0100	25	6	25	37.84	13.5
PIV-P2	P3 - 0100	27	3	28.6	44.5	16
	P3 - 0100	26	4.5	28.6	44.5	16
	P1 - 0100	29	6	25	37.84	13.5
PIV-P3	P3 - 0100	35	3	28.6	44.5	16
	P3 - 0100	34	4.5	28.6	44.5	16
	P3 - 0100	33	6	28.6	44.5	16
PIV-P4	P4 - 0110	34	3	36	58.83	20.5
	P4 - 0110	33	4.5	36	58.83	20.5
	P4 - 0110	33	6	36	58.83	20.5
PIV-P5	P5 - 0110	41	3	36	70.18	20.5
	P5 - 0100	40	4.5	36	70.18	20.5
	P5 - 0100	39	6	36	70.18	20.5
PIV-P6	P6 - 0110	40	2.8	44.4	77.64	23.7
	P6 - 0100	39	4	44.4	77.64	23.7
	P6 - 0100	38	5.6	44.4	77.64	23.7

※ Laminated chain matches PIV variable speed drive in different ratio and sizes, complete model or type is needed during ordering. Laminated chain can be interchange with different brand PIV speed change drive.

※ 疊片式鏈條是依據變速機規格的大小及速度調整範圍而相互配合，訂購備品時請提供變速機完整型號或鏈條規格。此疊片式鏈條也可用在其他廠牌變速機。

Chain Gap Adjusting Table 鏈條間隙表



Frame Size 型號	PIV-P1	PIV-P2	PIV-P3	PIV-P4	PIV-P5	PIV-P6
Gap 間隙 (mm)	20 ~ 25	25 ~ 35	25 ~ 35	30 ~ 40	30 ~ 40	35 ~ 45

※ Check & Adjust every 1000 hours of operation. 每 1000 小時，須檢查調整一次。

POWER TRANSMISSION INDEX

VARITRON®
Take Control In Speed

A1

Cycloidal Drive Reducer

賽驅樂減速機

HM



Pg.47

HX



Pg.55

H



Pg.61

VM



Pg.64

VX



Pg.72

V



Pg.78

Page
1~82

A2

RV Precision Cycloidal Gear

高精密擺線減速機

RV-E



Pg.84

RV-C



Pg.84

Page
83~84

B1

Precision Planetary Gearbox

精密行星減速機

DA



Pg.91

DM



Pg.93

DF



Pg.95

DH



Pg.97

DL



Pg.99

DN



Pg.101

Page
85~113

RAM-S



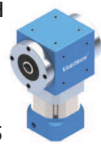
Pg.103

RAM-SS



Pg.104

RAM-H



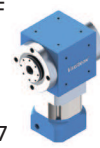
Pg.105

RAM-D



Pg.106

RAM-F



Pg.107

RAH-S



Pg.109

RAH-SS



Pg.110

RAH-H



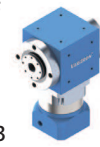
Pg.111

RAH-D



Pg.112

RAH-F



Pg.113

B2

Planetary Gear Reducer

遊星式減速機

HF



Pg.121

VF



Pg.122

HS



Pg.123

VS



Pg.124

Page
114~125

C1

Compact Helical Gear Motor Reducers

小型齒輪減速機

GH



Pg.130

GHM



Pg.131

GHD



Pg.132

GV



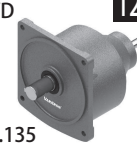
Pg.133

GVM



Pg.134

GVD



Pg.135

Page
126~135

C2

Helical Gear Motor Reducers

齒輪減速機

AMH



Pg.138

ADH



Pg.139

AMV



Pg.140

ADV



Pg.141

Page
136~141

POWER TRANSMISSION INDEX

C3

SEW Type Gear Reducer

歐規齒輪減速機

K



Pg.143

S



Pg.144

R



Pg.145

F



Pg.146

Page
142~146

C4

Industrial Helical Bevel Gearbox

齒輪箱

H



Pg.148

B



Pg.148

Page
147~148

D1

NMHV Hypoid-Helical Gear Reducer

萬向螺旋齒輪減速機

NMHV



Pg.156

NHV



Pg.157

Page
149~157

D2

NMRV Worm Gear Reducer

萬向蝸輪減速機

NMRV



Pg.168

NMRV-NMRV



Pg.169

NRV



Pg.170

NRV-NMRV



Pg.170

PC-NMRV



Pg.171

Page
158~173

D3

Worm Gear Speed Reducer

蝸輪減速機

HW



Pg.181

HMW



Pg.182

HOM



Pg.183

LW



Pg.184

LMW



Pg.185

HOW



Pg.186

Page
174~201

LOW



Pg.186

VW



Pg.187

VMW



Pg.188

VOW



Pg.189

VOM



Pg.190

UW



Pg.191

UMW



Pg.192

TW



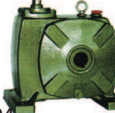
Pg.193

TMW



Pg.193

TOW



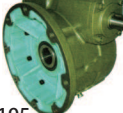
Pg.194

TOM



Pg.194

VOF



Pg.195

VOFM



Pg.195

LH



Pg.196

LHM



Pg.196

LOH



Pg.197

LOHM



Pg.197

VH



Pg.198

UH



Pg.198

VHM



Pg.199

UHM



Pg.199

VOH



Pg.200

VOHM



Pg.200

E1

Disco Speed Variator

無段變速機

AM



Pg.208

AK



Pg.208

AVM



Pg.208

AV



Pg.208

AHM



Pg.208

Page
202~209

TXF



Pg.209

TKF



Pg.209

E2

Belt Stepless Variable Speed Drive

皮帶變速機

APH



Pg.210

LW



Pg.211

HV



Pg.211

Page
210~211

E3

Five Steps Buffered Speed Changer

五段緩衝式變速機

LM



Pg.212

Page
212

E4

PIV Chain Variable Speed Drive

鍊條無段變速機

PIV-H



Pg.214

PIV-V



Pg.214

Page
213~215

F1

Spiral Bevel Gear Box

十字轉向機

LG



Pg.218

Page
216~218

F2

Spiral Screw Rod Actuators

螺桿升降機

SR



Pg.221

SRM



Pg.221

Page
219~222

G

Induction Electric Motor

感應馬達

AEEH/AEEP/AEES



Pg.228

AEVH/AEVP/AEVS



Pg.229

AEEH-ALB3



Pg.231

AEVH-ALB5



Pg.232

AEVH-ALB14



Pg.232

Page
223~232

H

Agitator Mixer

攪拌機

HHM



Pg.237

LW



Pg.238

GVV



Pg.239

CS/CSS



Pg.240

HMB



Pg.241

SC/SCB



Pg.242

Page
233~242